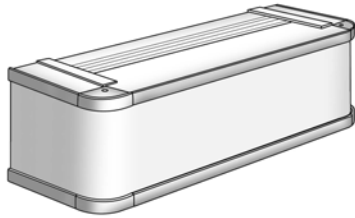




Dura-Roll Shading Valance Systems



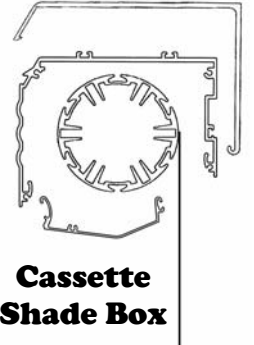
Inserted Fabric Valance



**4"
Square Fascia**



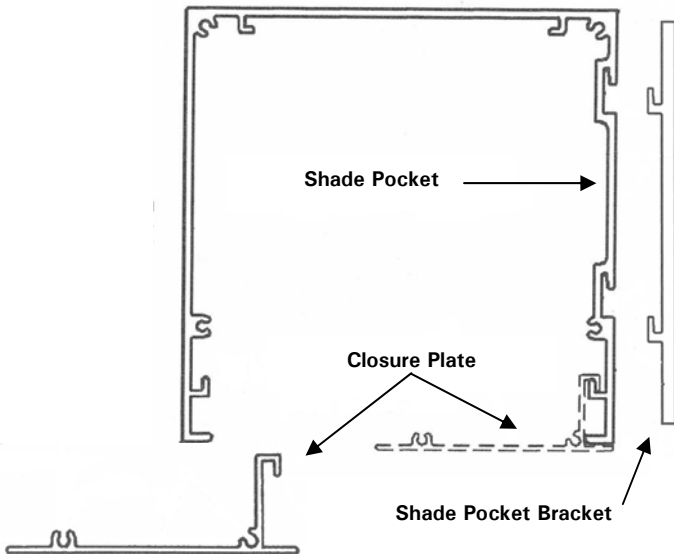
**3" & 4"
Round Fascia**



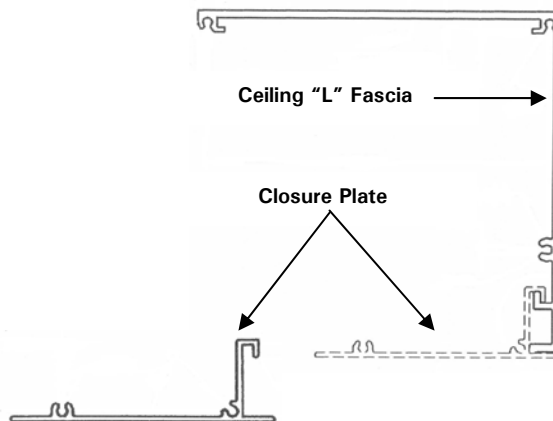
**Cassette
Shade Box**



**Fabric Wrapped
Round Fascia**



Shade Pocket with Closure



Ceiling "L" Fascia with Closure

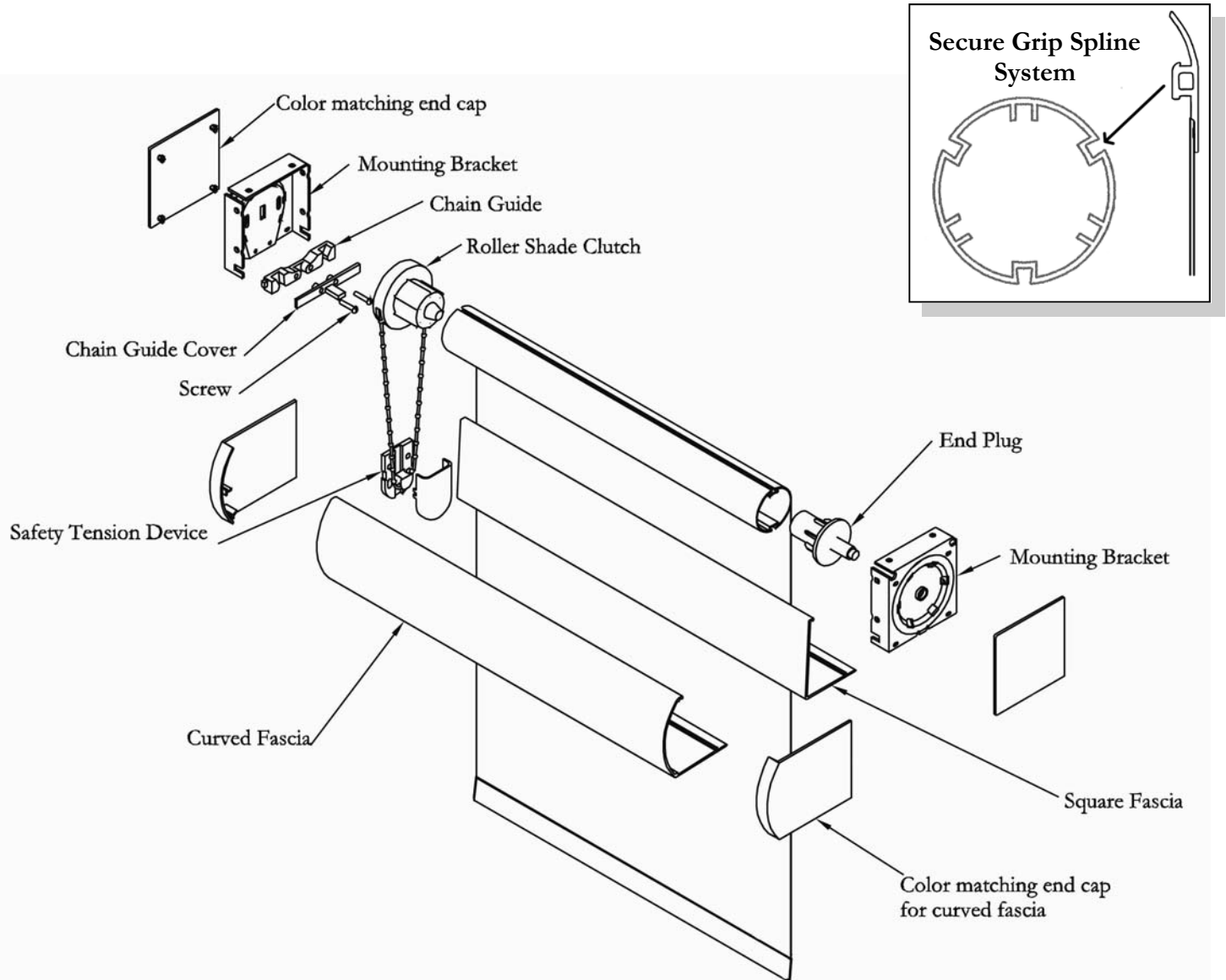
Dura-Roll
By Mariak Industries

Mariak Industries, Inc.
1609 Lockness Place
Torrance, CA 90501
Phone: (800) 562-7425
Phone: (800) 5-MARIAK
Fax: (800) 459-6999
www.mariak.com

 **Mariak Industries**
The Contract Source



Dura-Roll Shading Clutch Systems



Dura-Roll
By Mariak Industries

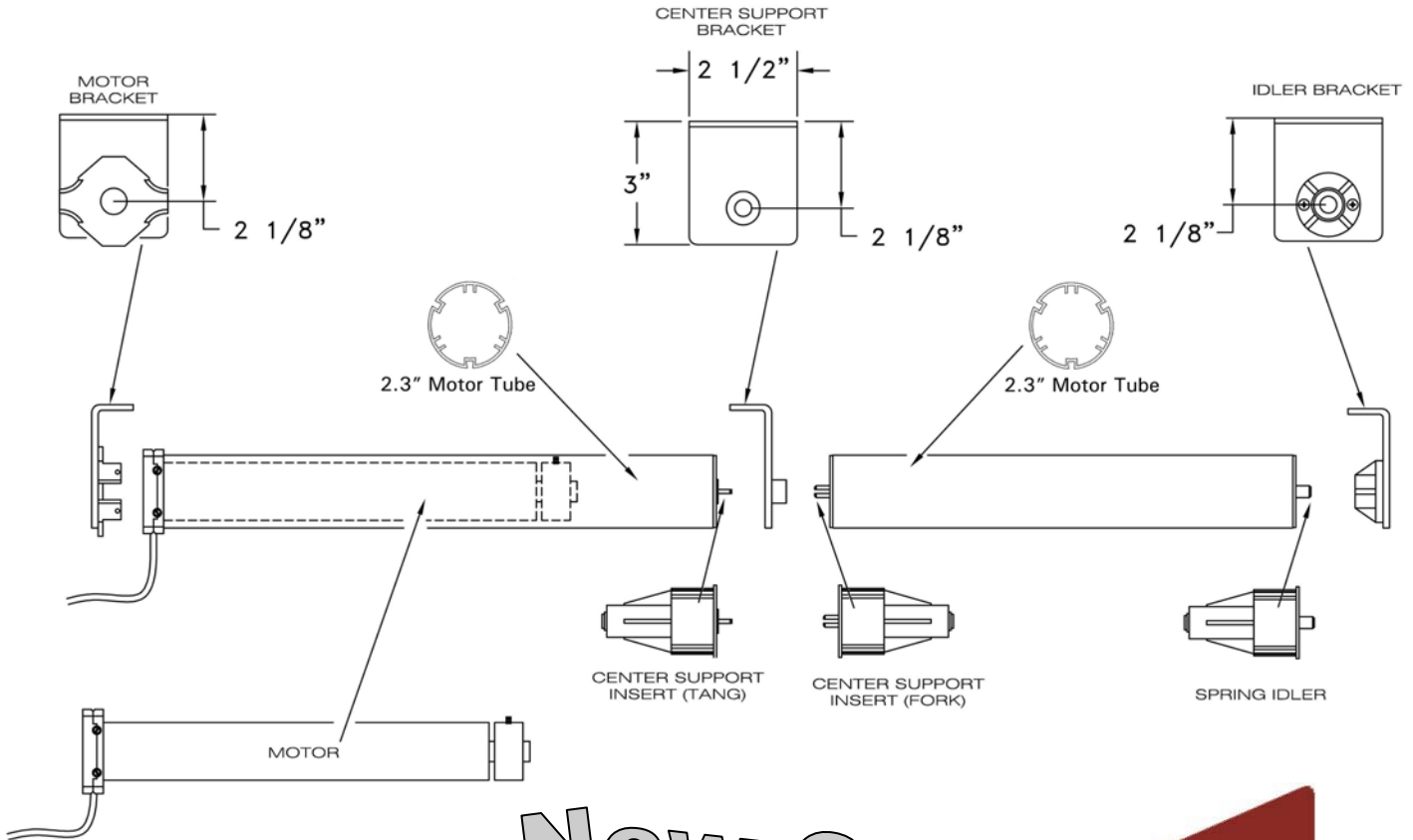
Mariak Industries, Inc.
1609 Lockness Place
Torrance, CA 90501
Phone: (800) 562-7425
Phone: (800) 5-MARIAK
Fax: (800) 459-6999
www.mariak.com

Features

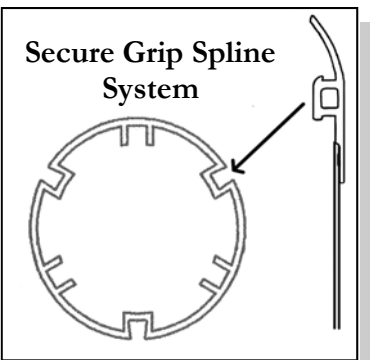
- ◆ Secure Grip Removable Spline System
- ◆ Dura-Roll Deflection Resistant Tubing Line
- ◆ Heavy Duty Clutch Mechanism
- ◆ Collapsible Spring Loaded Idle End Cap
- ◆ Variety of Valance & Hembar Options
- ◆ White Plastic, Black Plastic, & Stainless Steel Chain Options



Dura-Roll Shading Motor Systems



New Quiet Motors



Features

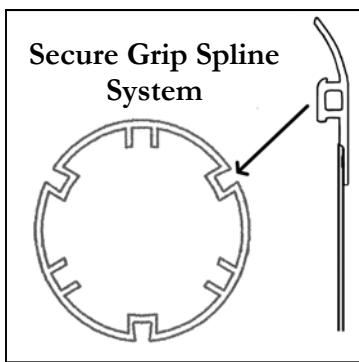
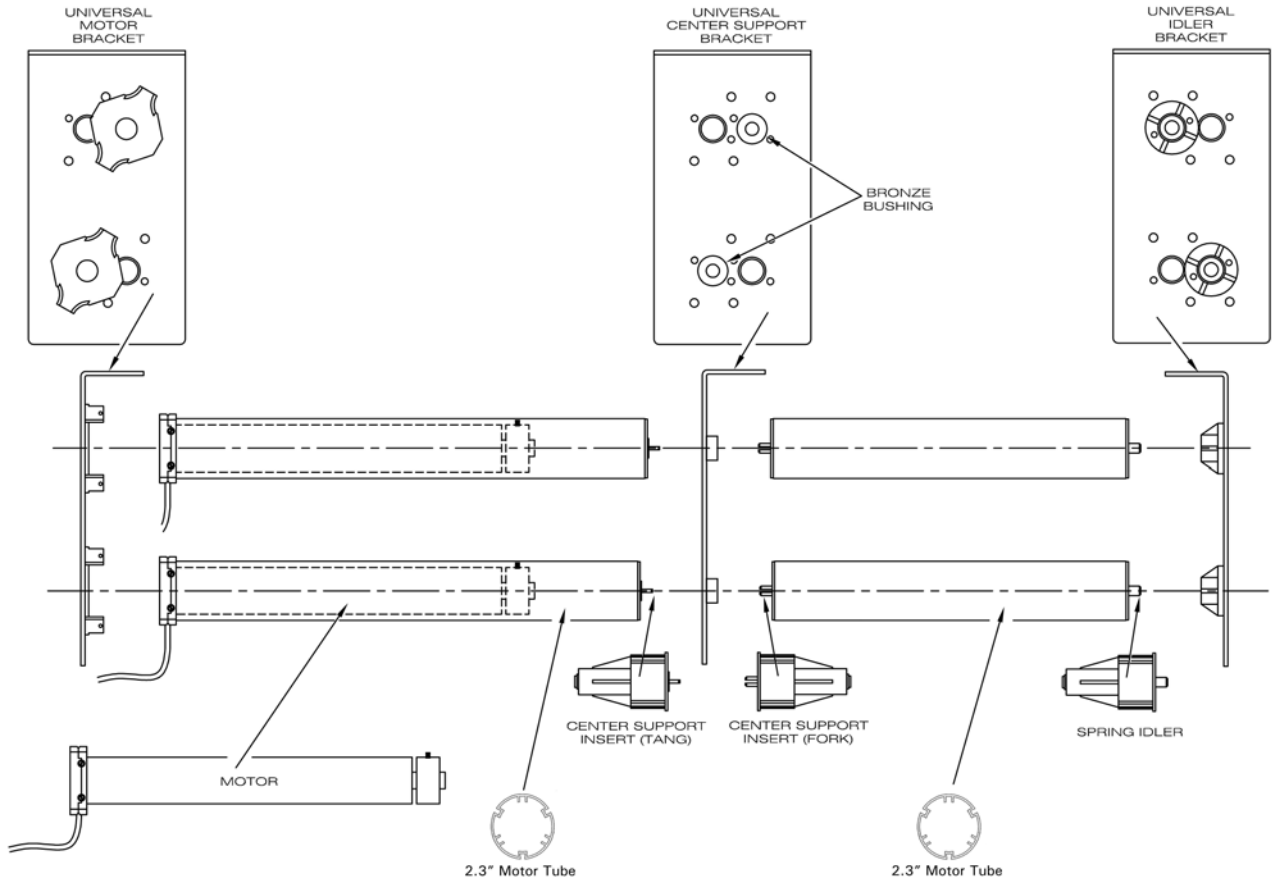
- ◆ Secure Grip Removable Spline System
- ◆ Dura-Roll Deflection Resistant Tubing Line
- ◆ Quiet Motor System with Mechanical Limits
- ◆ Heavy Duty Collapsible Spring Loaded Idle End Cap
- ◆ Narrow Motorized Shade Light Gap of only 2"
- ◆ Variety of Valance & Hembar Options
- ◆ 4-Wire Hardwired & 3-Wire Plug-In Radio Frequency Motors
- ◆ Straight Coupler Light Gap is only 5/8" (Spring Loaded)
- ◆ Flexible 90-Degree Corner Coupler

Dura-R
By Mariak Industries

Mariak Industries, Inc.
1609 Lockness Place
Torrance, CA 90501
Phone: (800) 562-7425
Phone: (800) 5-MARIAK
Fax: (800) 459-6999
www.mariak.com



Dura-Roll Shading Dual Motor Systems



Features

- ◆ Secure Grip Removable Spline System
- ◆ Dura-Roll Deflection Resistant Tubing Line
- ◆ Quiet Motor System with Mechanical Limits
- ◆ Heavy Duty Collapsible Spring Loaded Idle End Cap
- ◆ Narrow Motorized Shade Light Gap of only 2"
- ◆ Variety of Valance & Hembar Options
- ◆ 4-Wire Hardwired & 3-Wire Plug-In Radio Frequency Motors
- ◆ Straight Coupler Light Gap is only 5/8" (Spring Loaded)
- ◆ Flexible 90-Degree Corner Coupler

Dura-Roll
By Mariak Industries

Mariak Industries, Inc.
1609 Lockness Place
Torrance, CA 90501
Phone: (800) 562-7425
Phone: (800) 5-MARIAK
Fax: (800) 459-6999
www.mariak.com